

Operational Forum Meeting



10th June 2015, 10:30AM
Radisson Grafton Hotel, 130 Tottenham Court Road, London.

System Management Principles Statement



- **Compliance report for April and May 2015**
- **Summary of balancing actions and breaches for April and May 2015**
- **Performance compared to last year**

Summary Report

	Apr-15	May-15
Total Number of Buy Actions	4	8
Total Number of Sell Actions	19	2
Total	23	10

	Apr-15	May-15
Number of Material Breaches	0	0
Number of Non-Material Breaches	0	0

	May-15	May-14
Number of Balancing Actions (Calendar year to date)	84	117
Number of Material Breaches (Calendar year to date)	0	0
Number of Non-Material Breaches (Calendar year to date)	0	0

Operational Overview

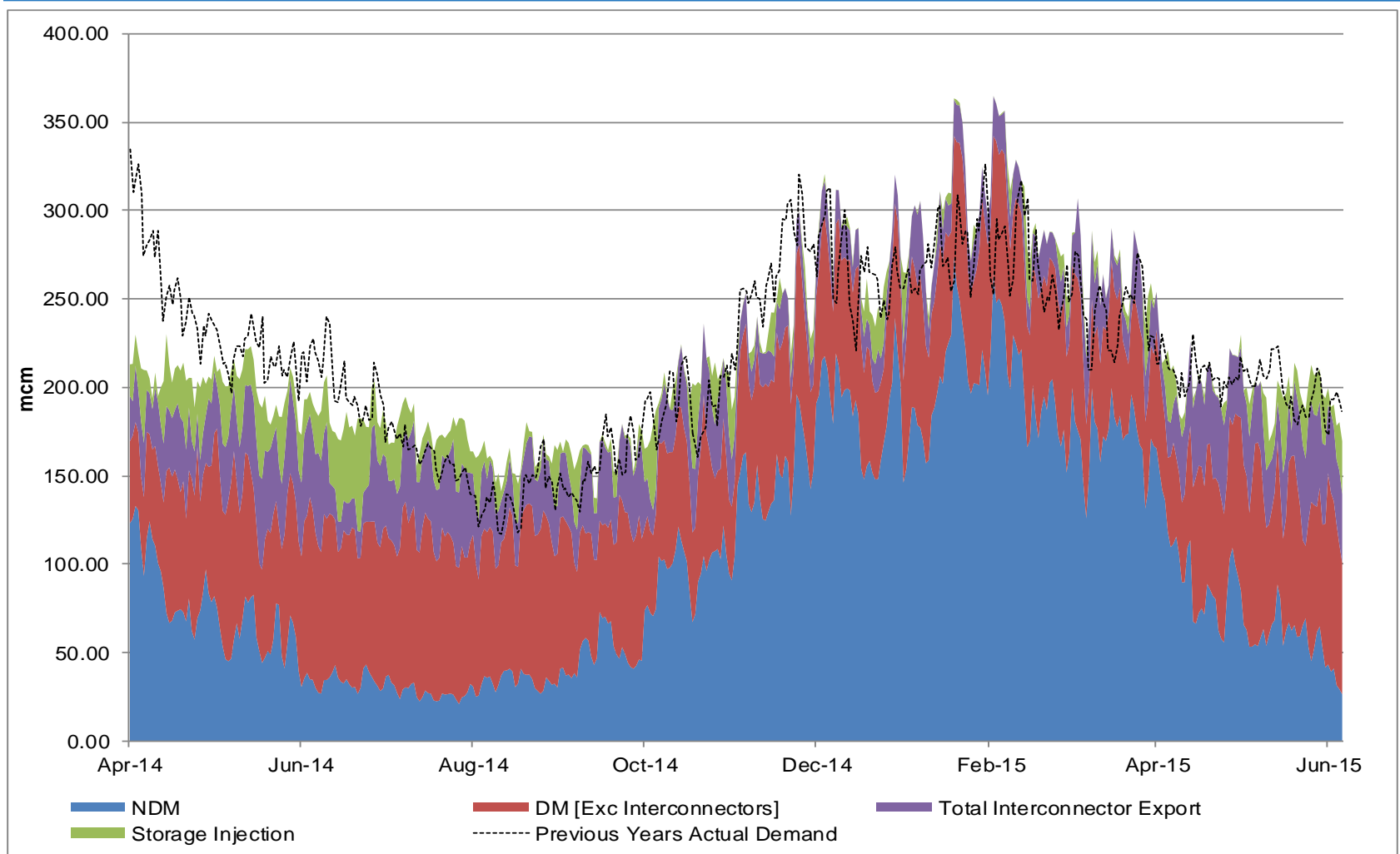


Demands



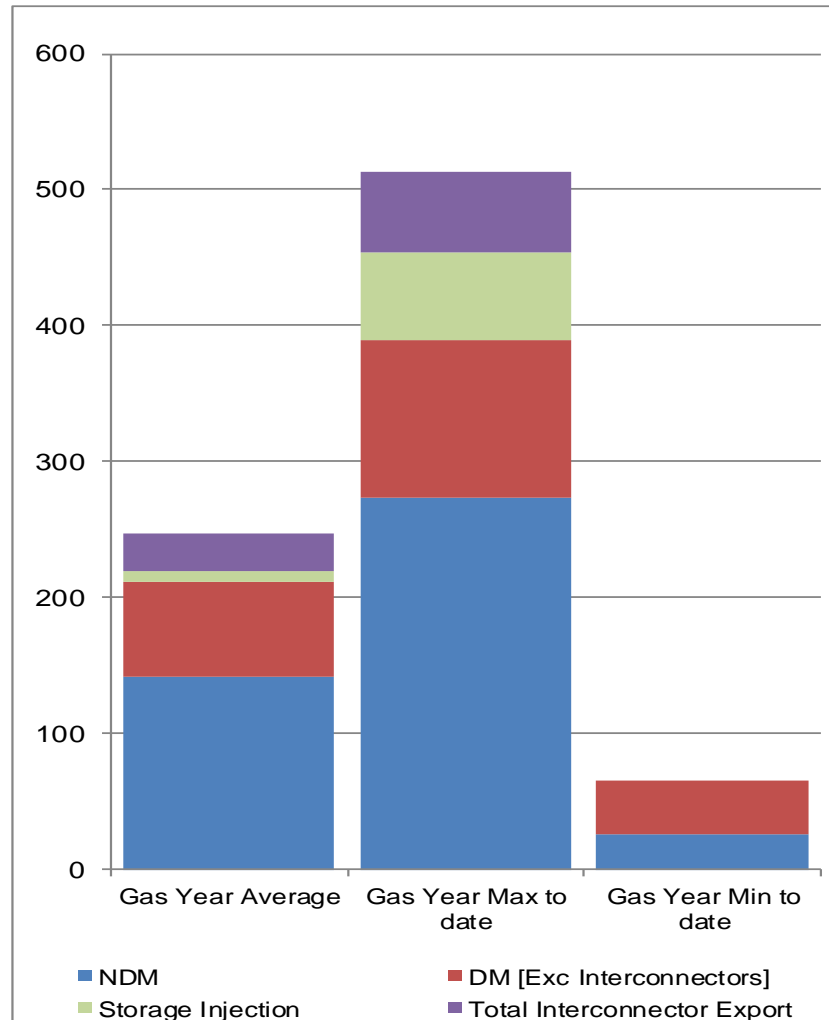
Gas Demand Breakdown

1st April 2014 to 6th June 2015 vs Previous Year



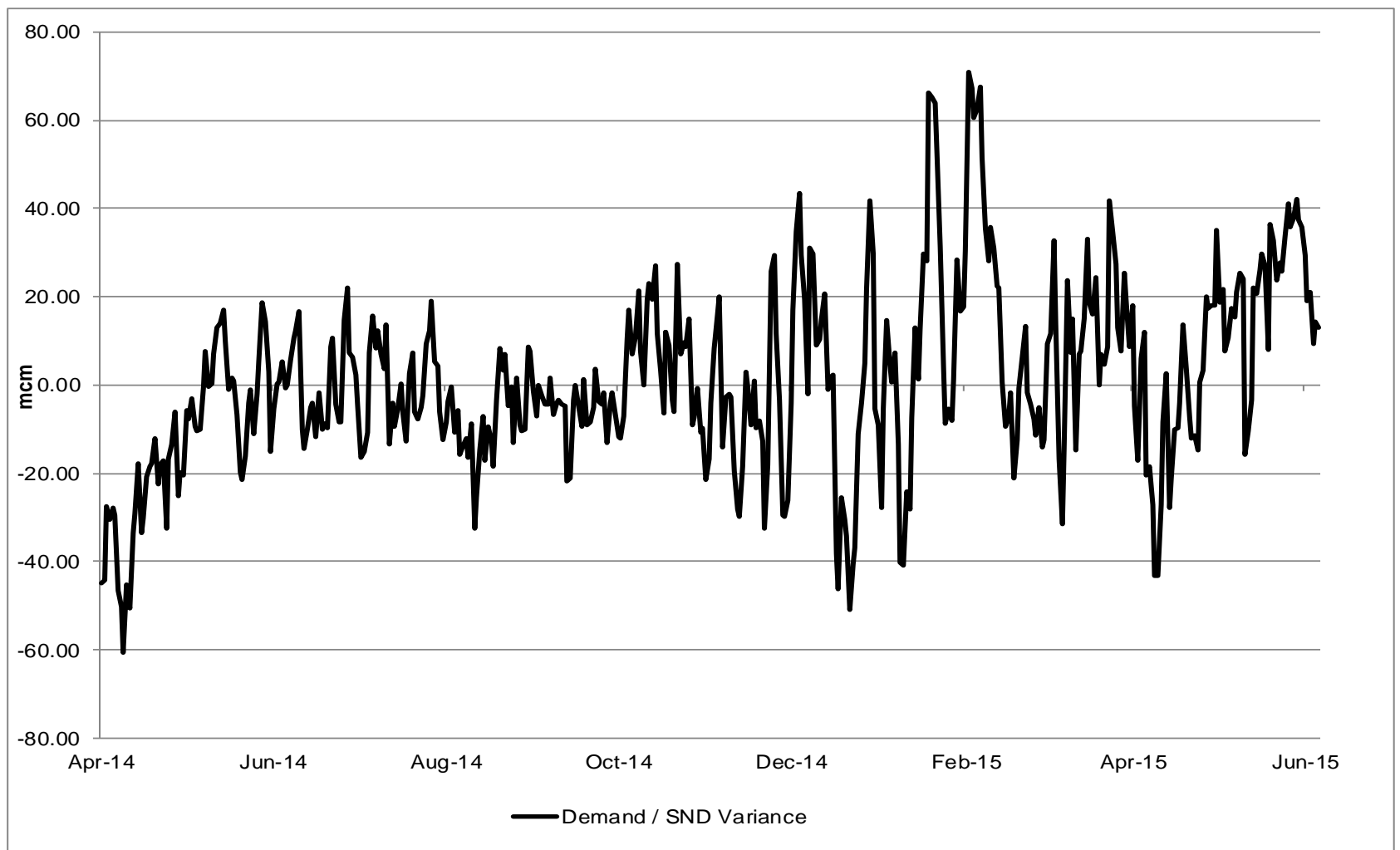
Gas Demand Statistics

1st October 2014 to 6th June 2015



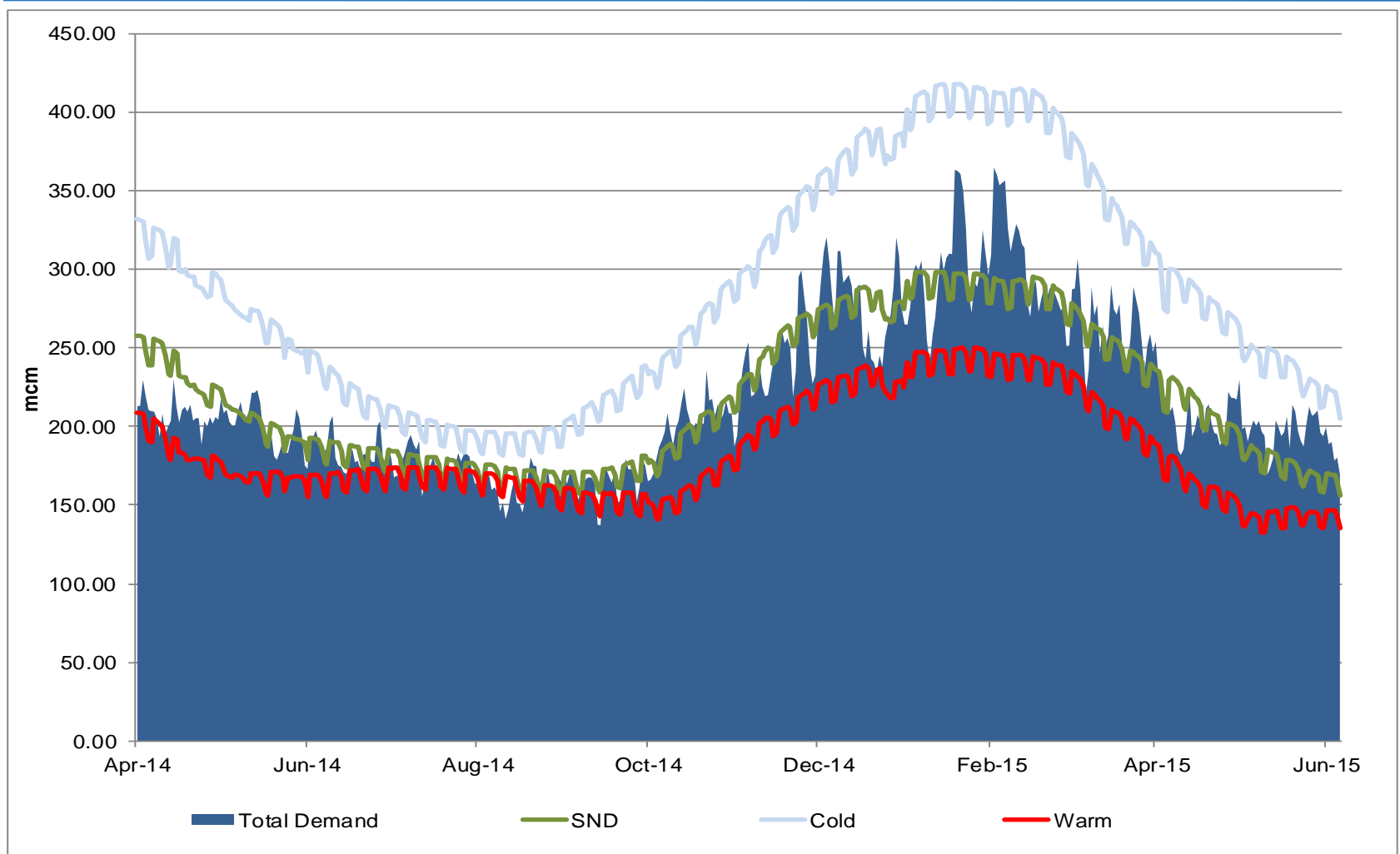
Demand Variance from SND

1st April 2014 to 6th June 2015



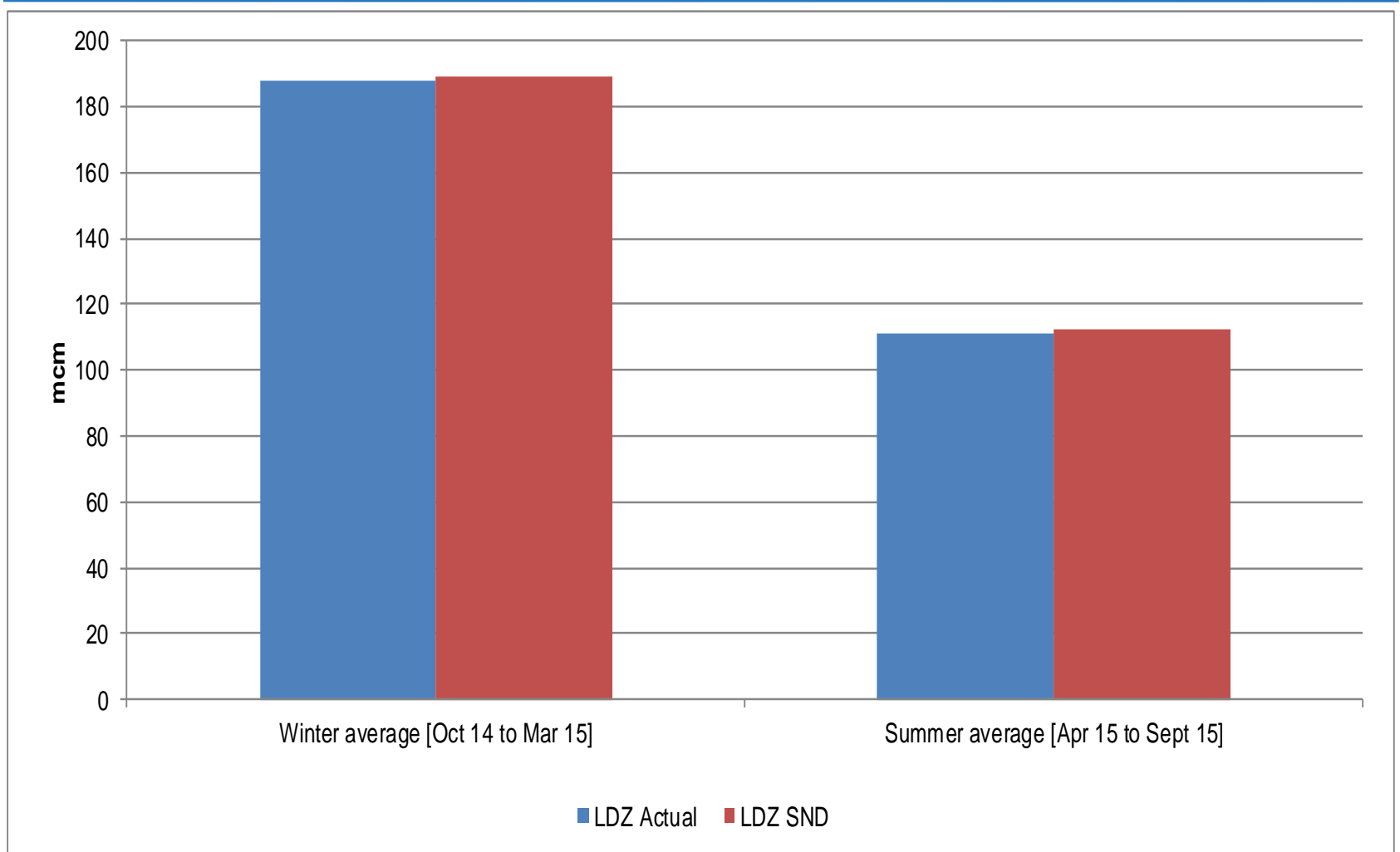
Gas Demand Vs SND / Cold / Warm

1st April 2014 to 6th June 2015



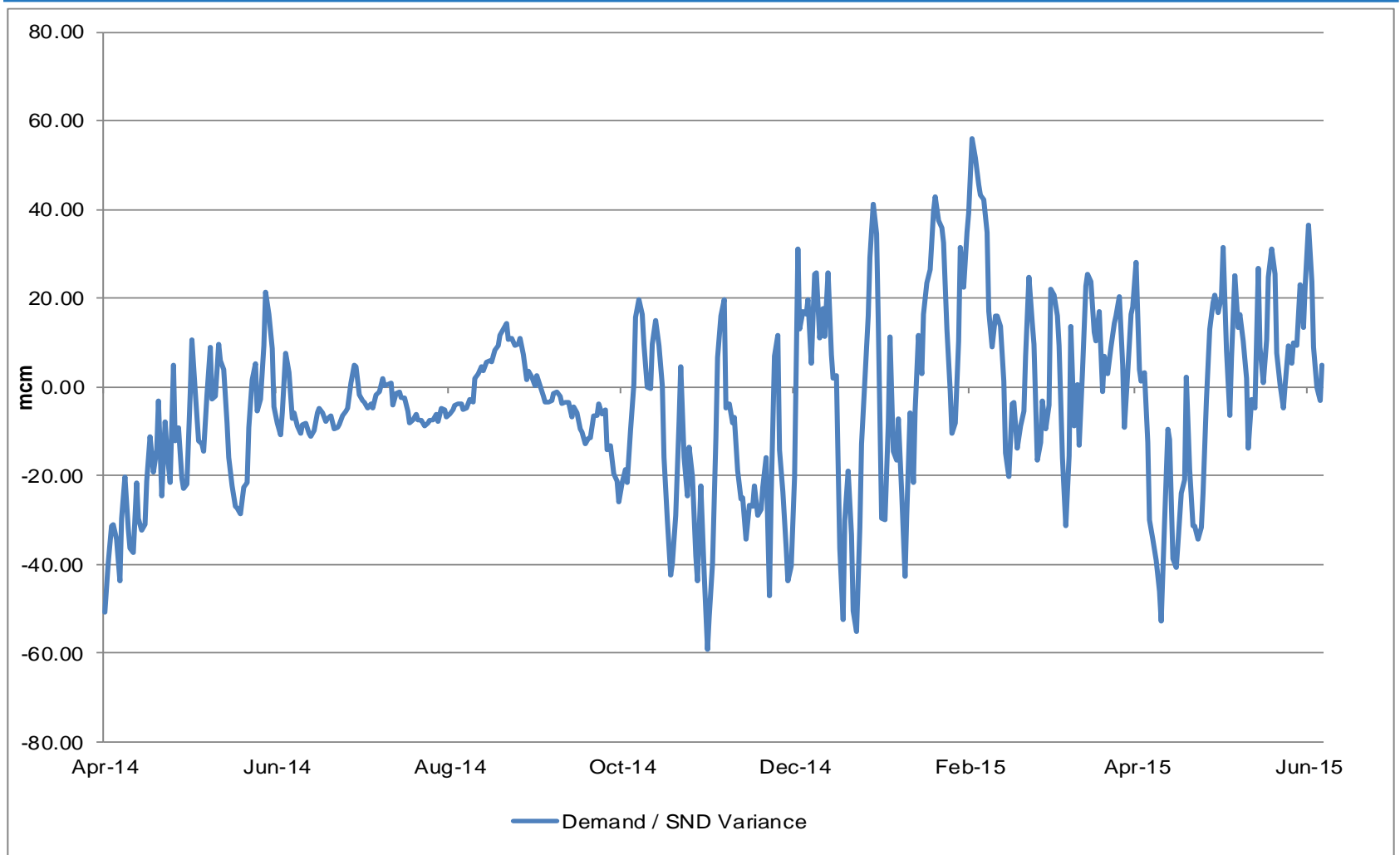
LDZ Actual Demand Vs LDZ SND

1st October 2014 to 6th June 2015



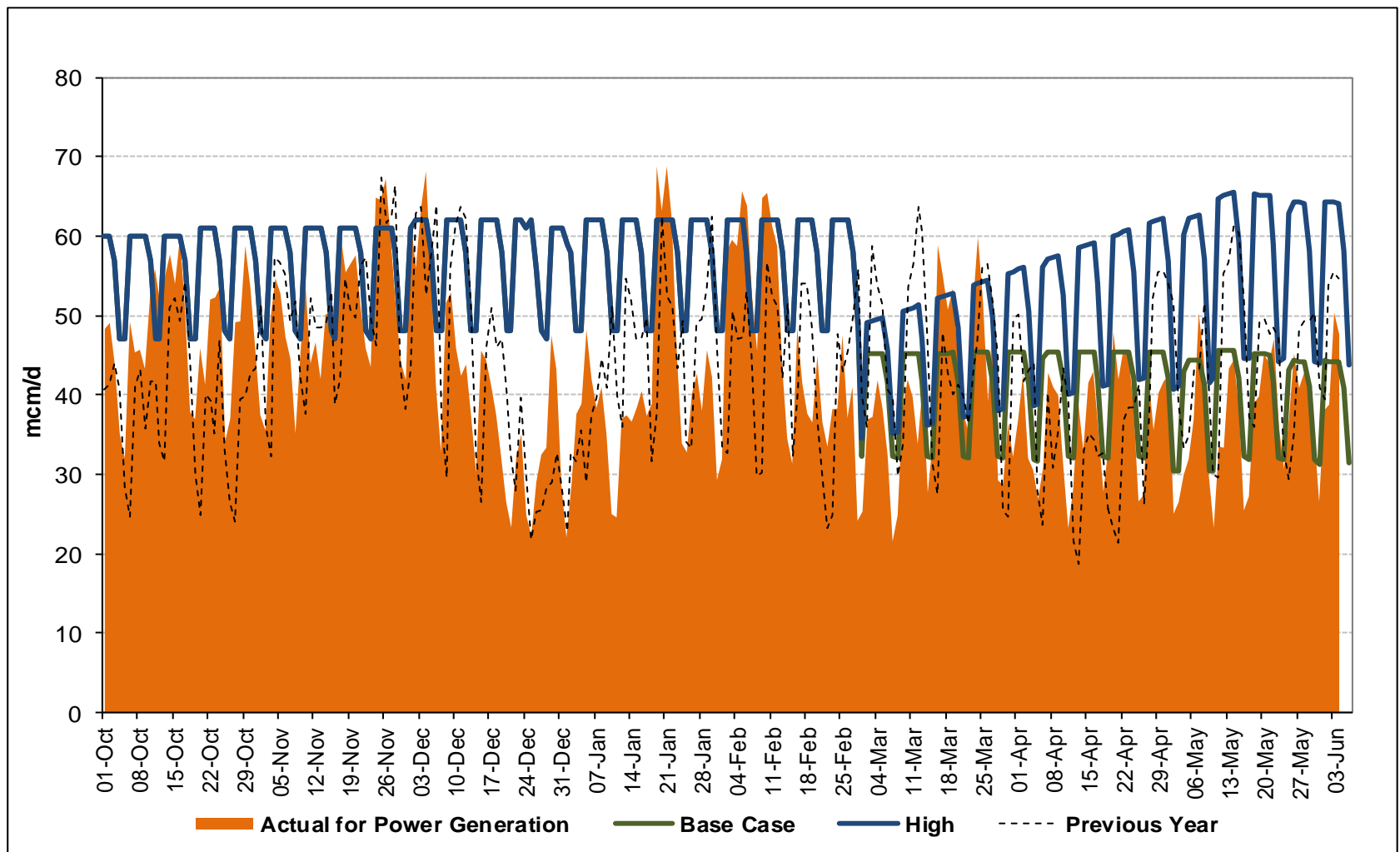
LDZ Demand / LDZ SND Variance

1st April 2014 to 6th June 2015



Gas Consumption for Power Generation

1st October 2014 to 6th June 2015

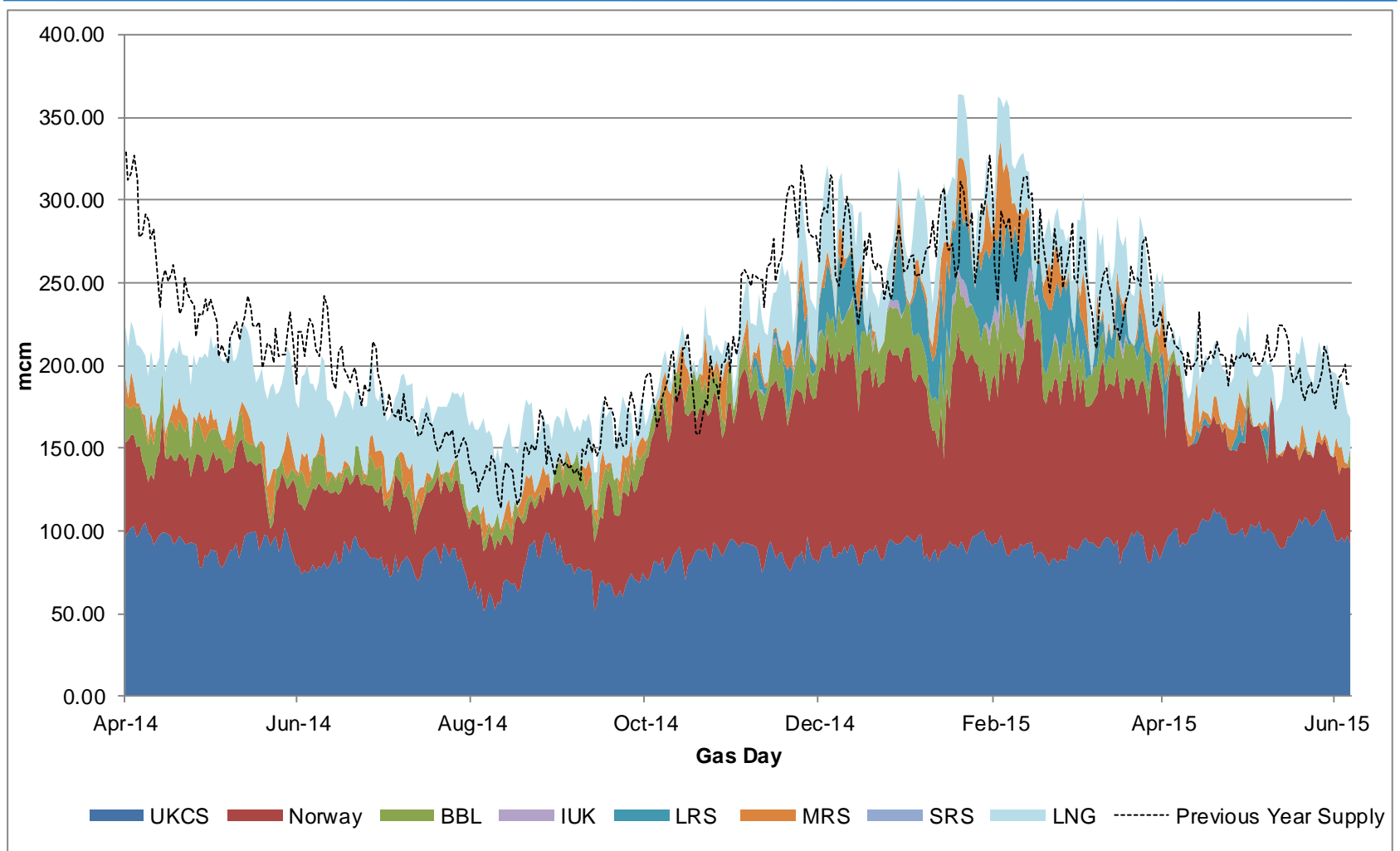


Supplies



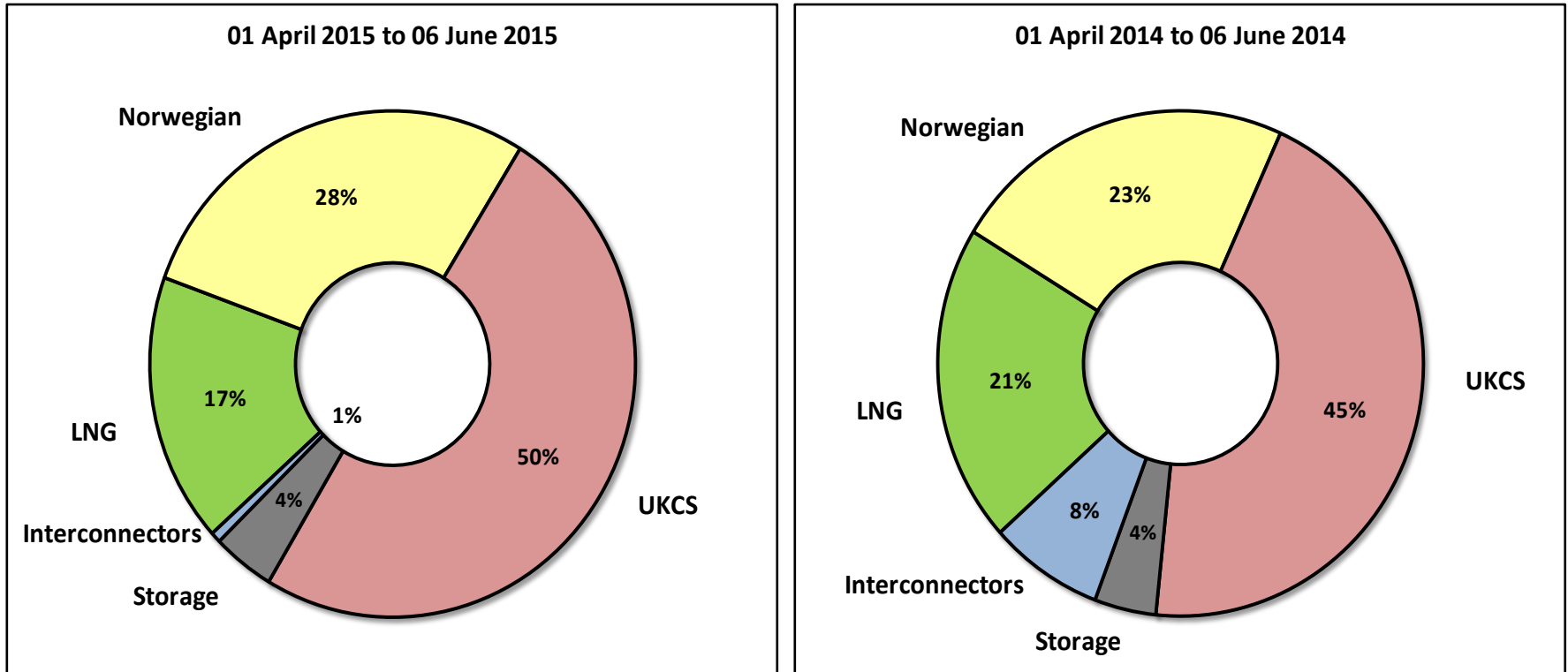
Gas Supply Breakdown

1st April 2014 to 6th June 2015 vs Previous Year



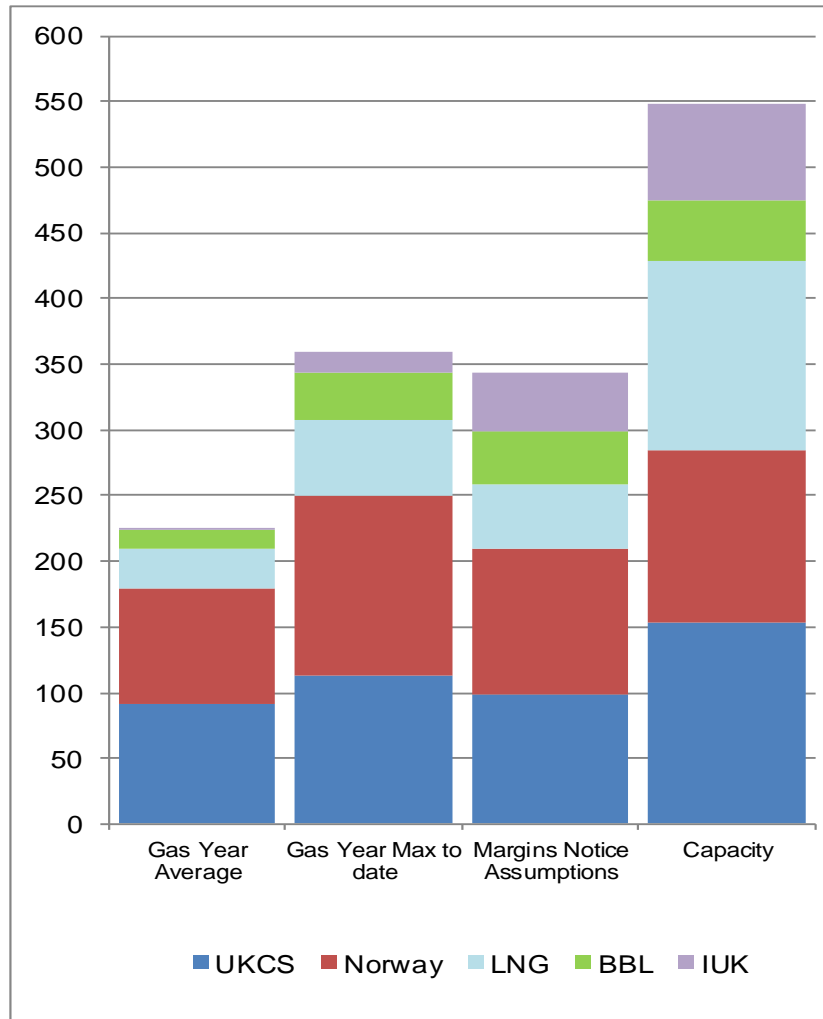
Gas Supply Breakdown

1st October 2014 to 6th June 2015 vs Previous Year



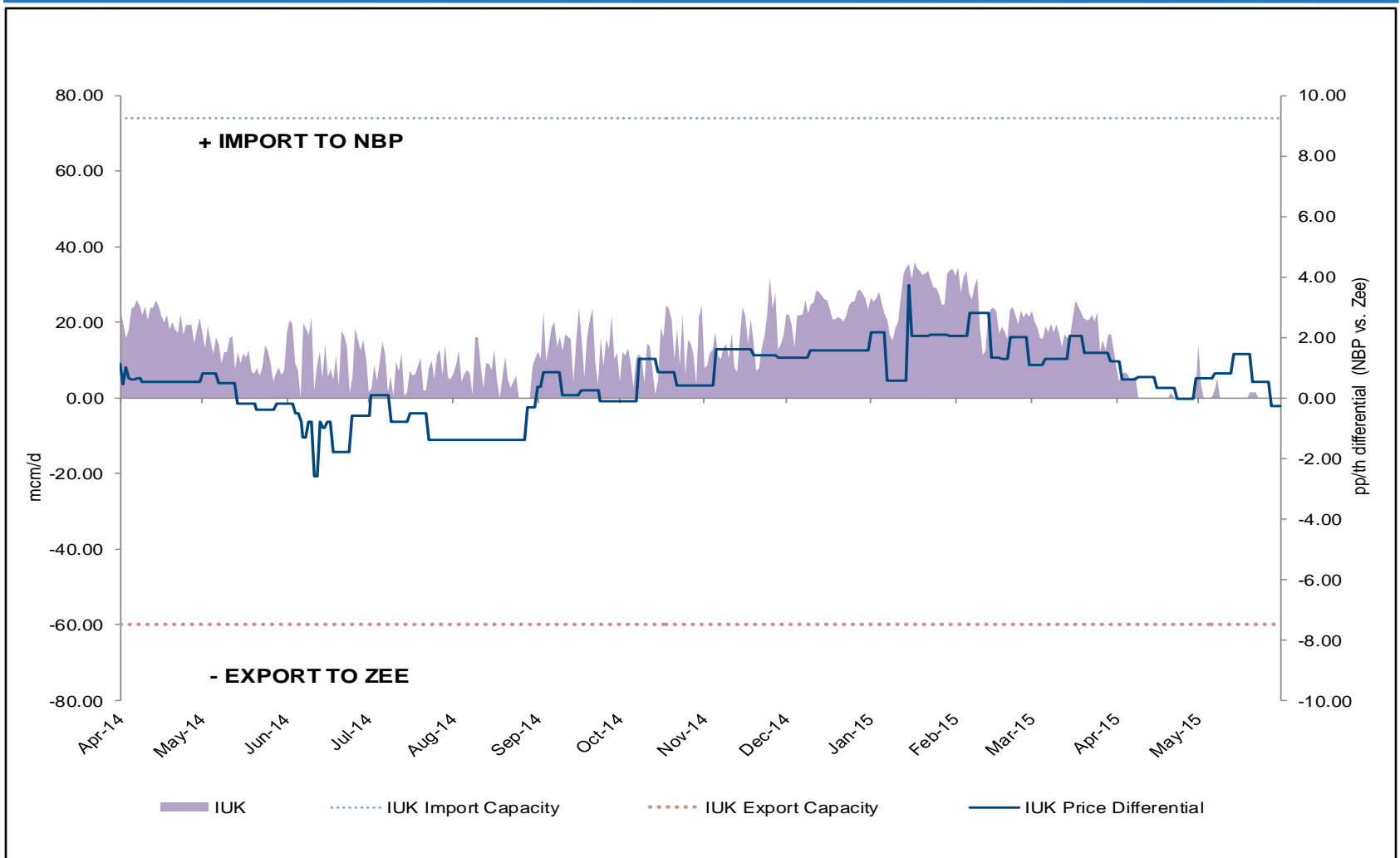
NSS [Non-Storage Supply]

1st October 2014 to 6th June 2015



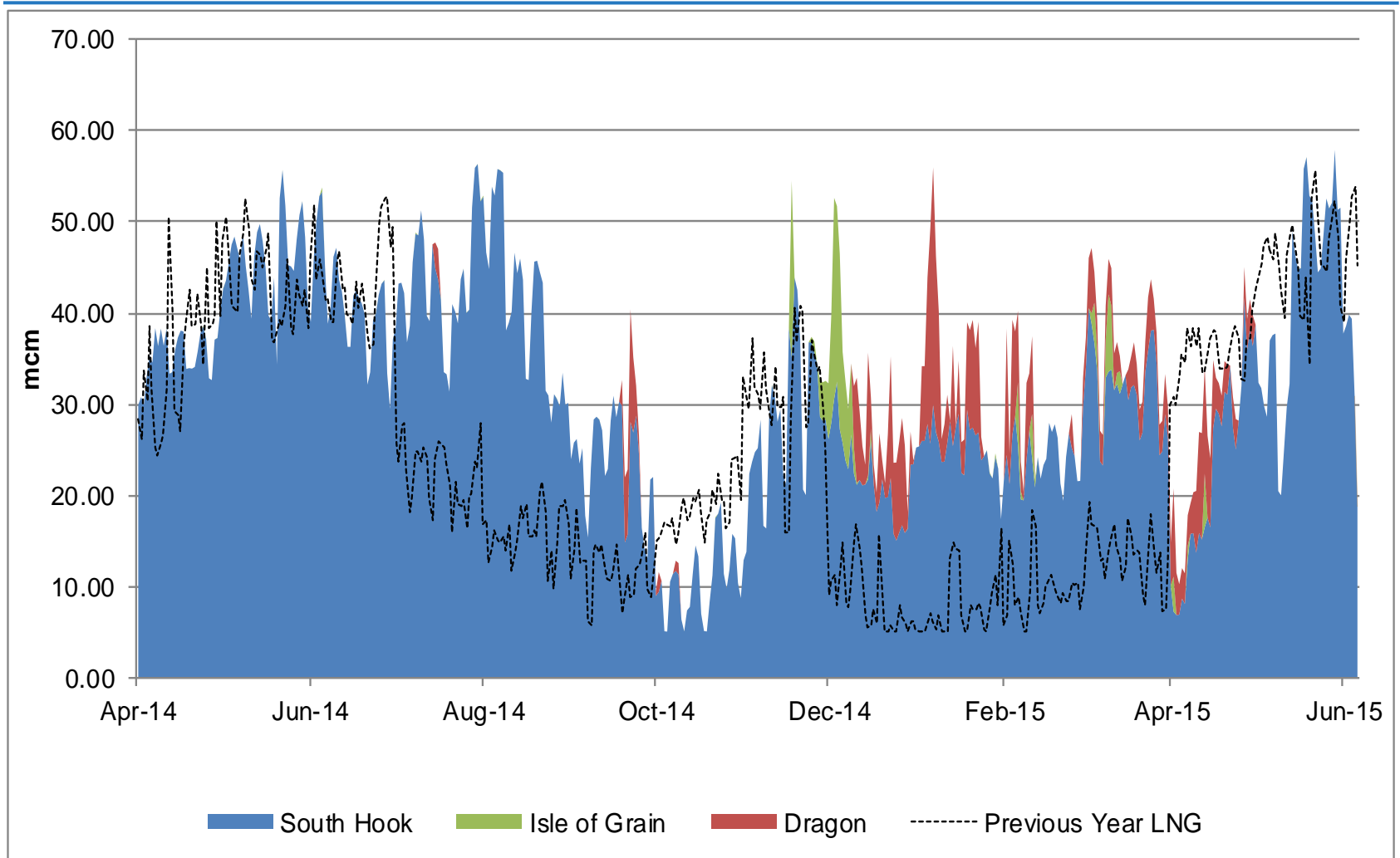
IUK Flows vs NBP & ZEE Price Differential

1st April 2014 to 31st May 2015



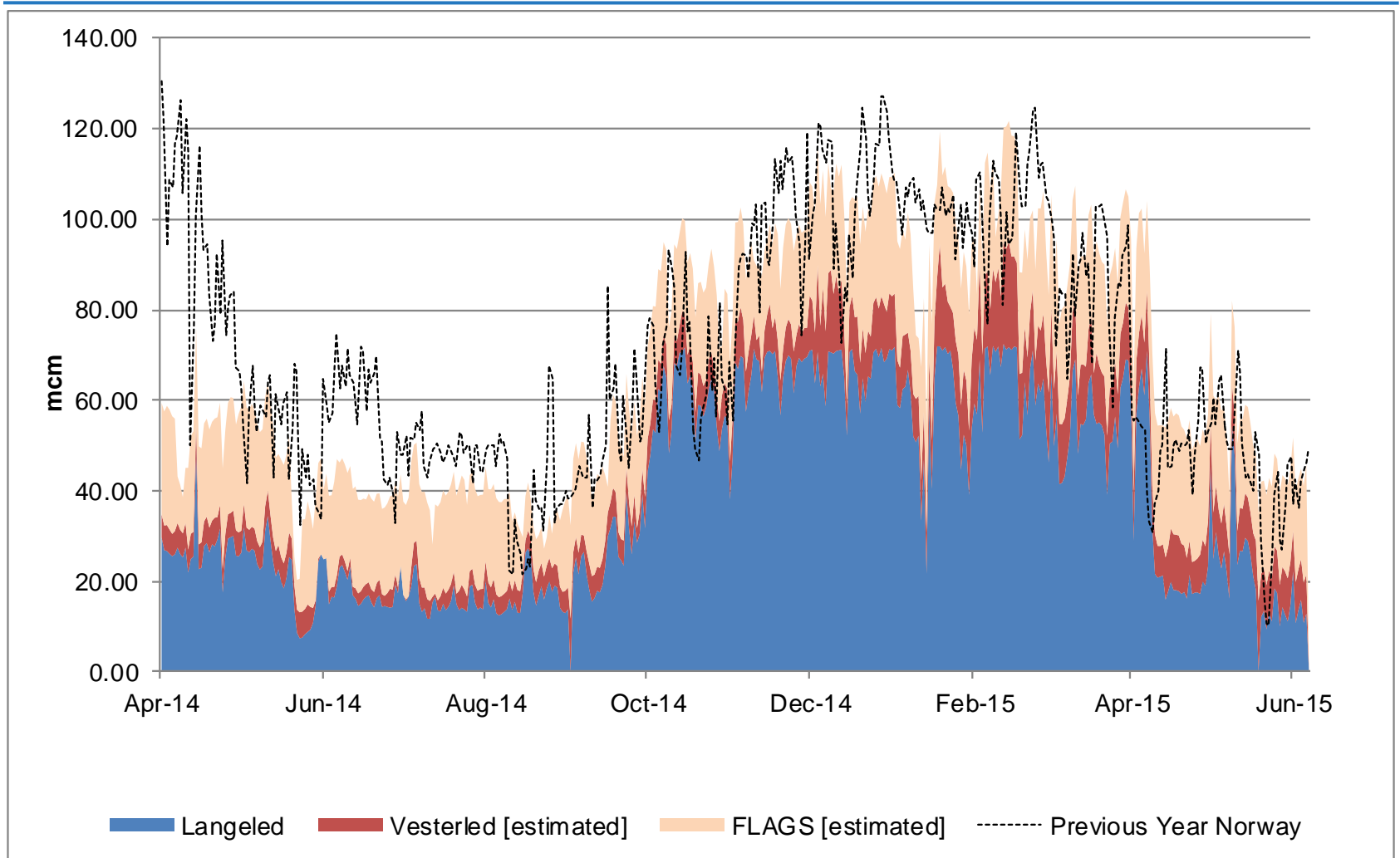
LNG Terminal Flows

1st April 2014 to 6th June 2015



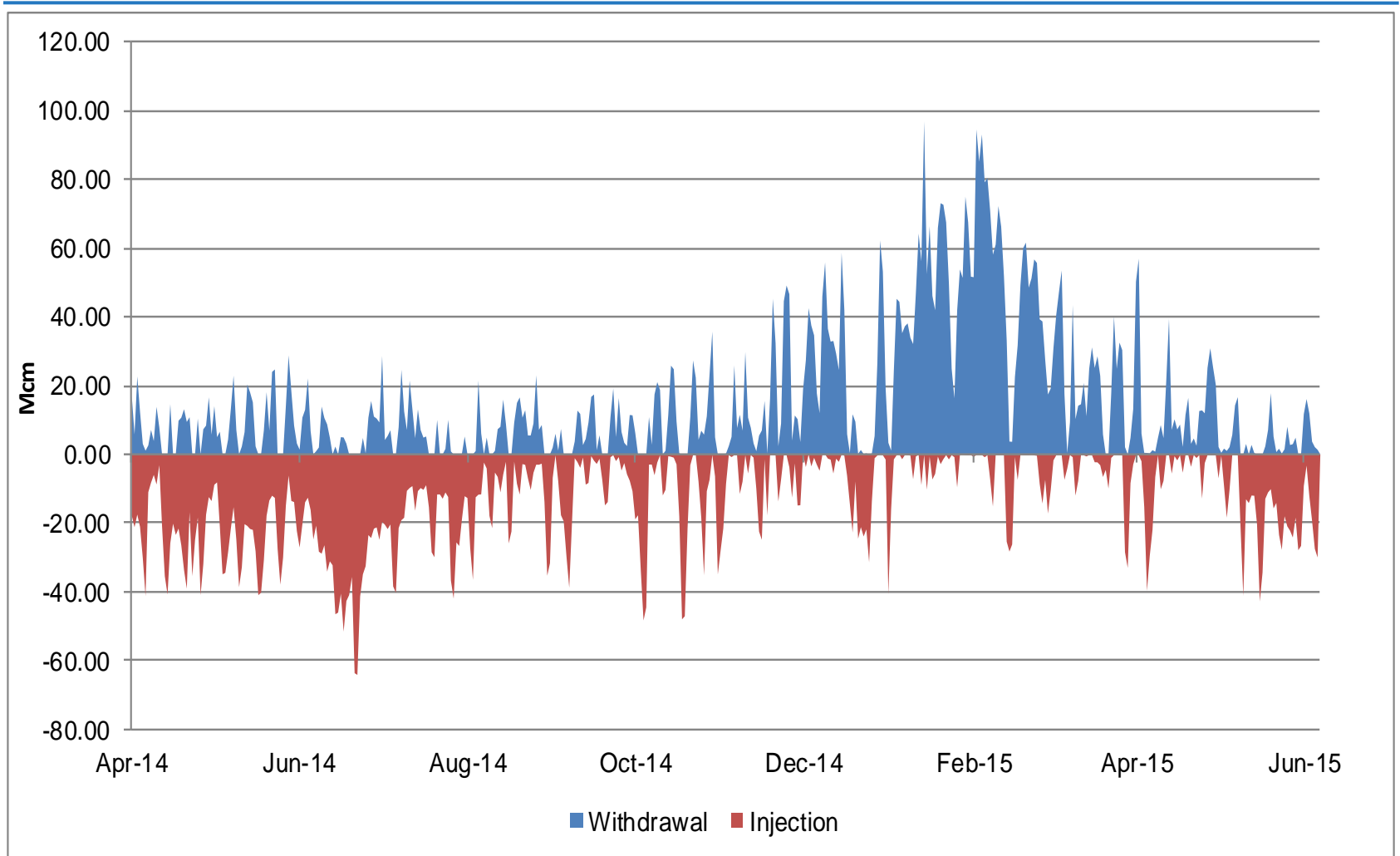
Norway Flows

1st April 2014 to 6th June 2015



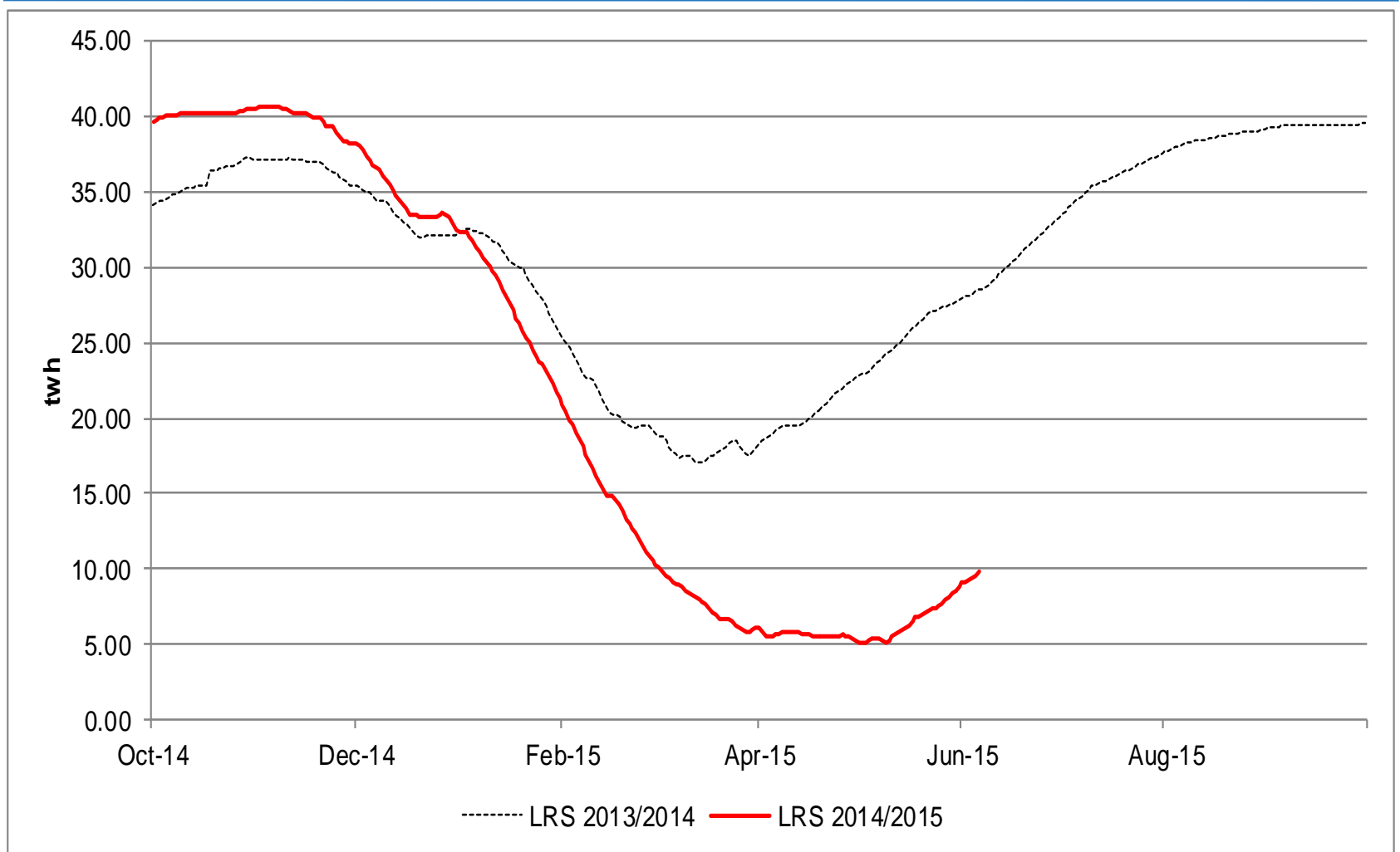
Storage Withdrawal vs Injection

1st April 2014 to 6th June 2015



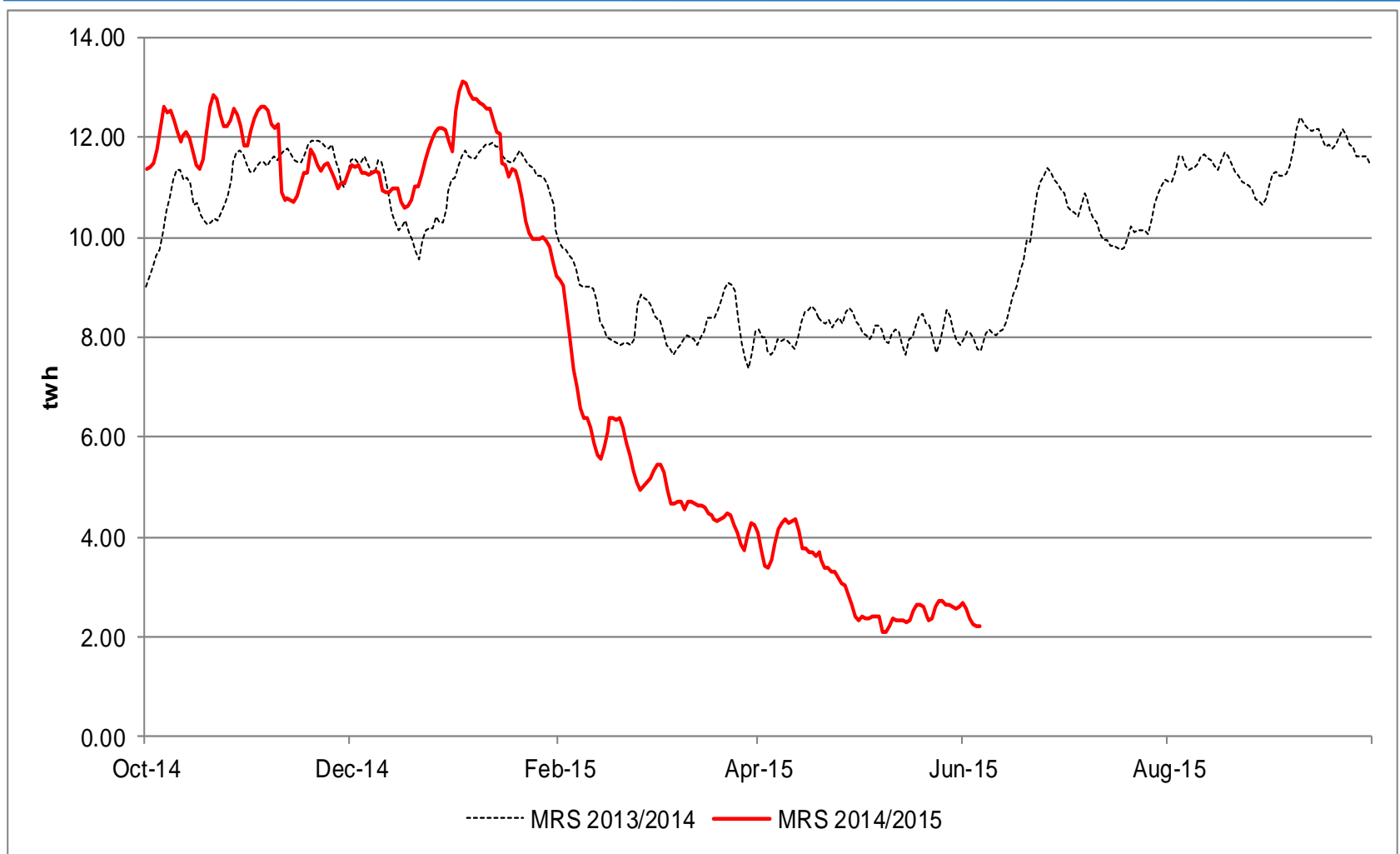
Long Range Storage Stocks [LRS]

1st October 2014 to 6th June 2015 vs Previous Years



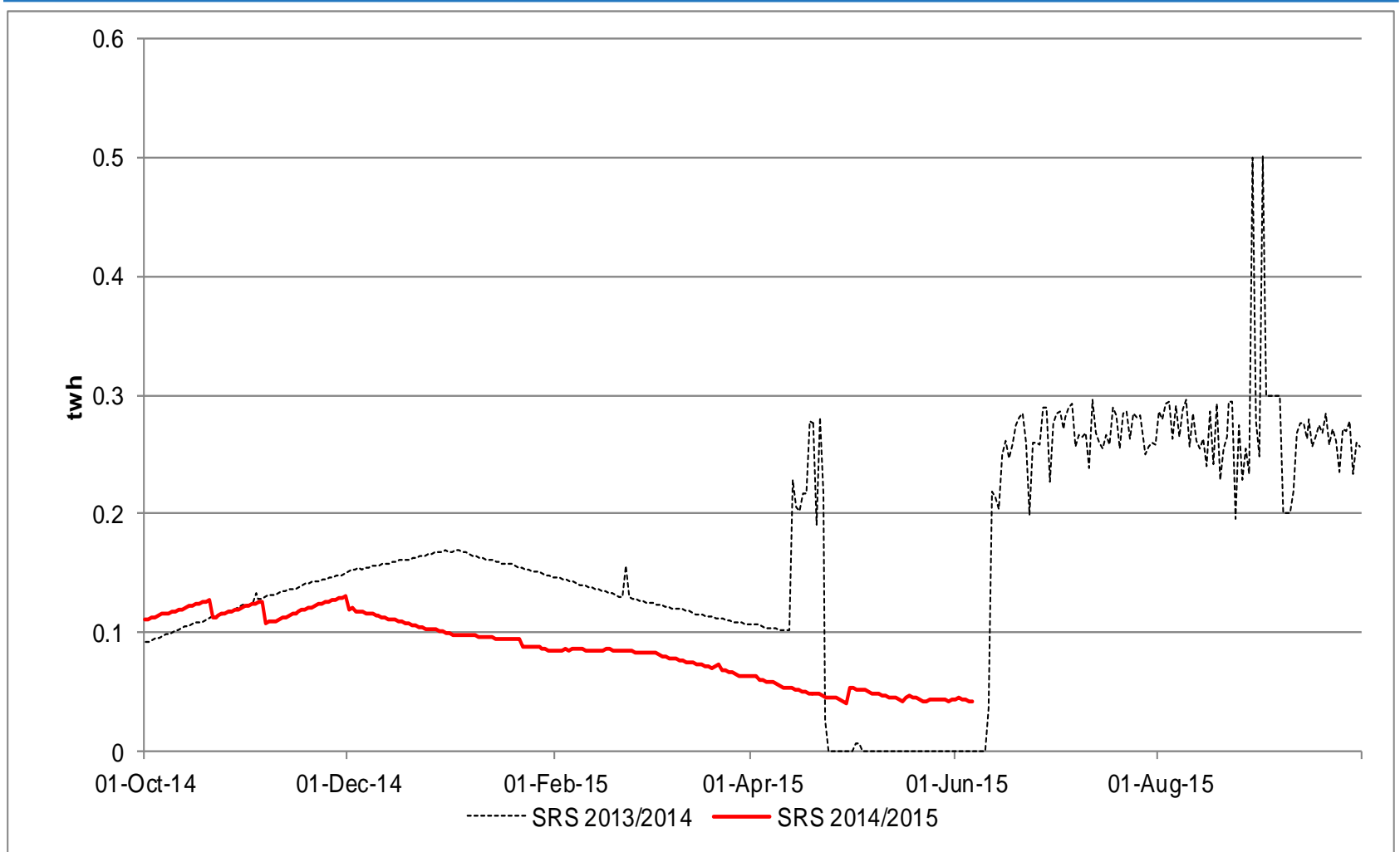
Medium Range Storage Stocks [MRS]

1st October 2014 to 6th June 2015 Vs Previous Years



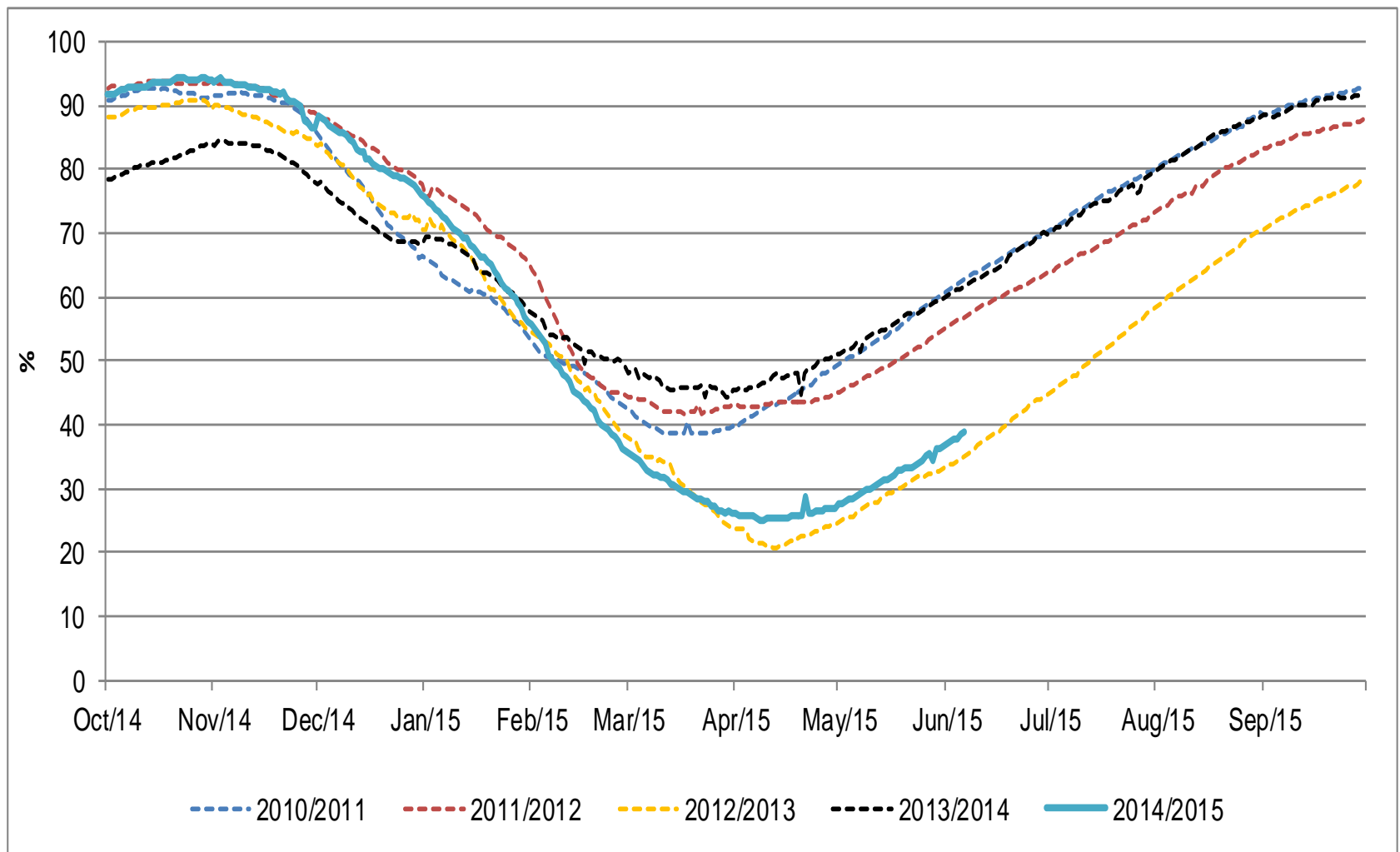
Short Range Storage Stocks [SRS]

1st October 2014 to 6th June 2015 vs Previous Years



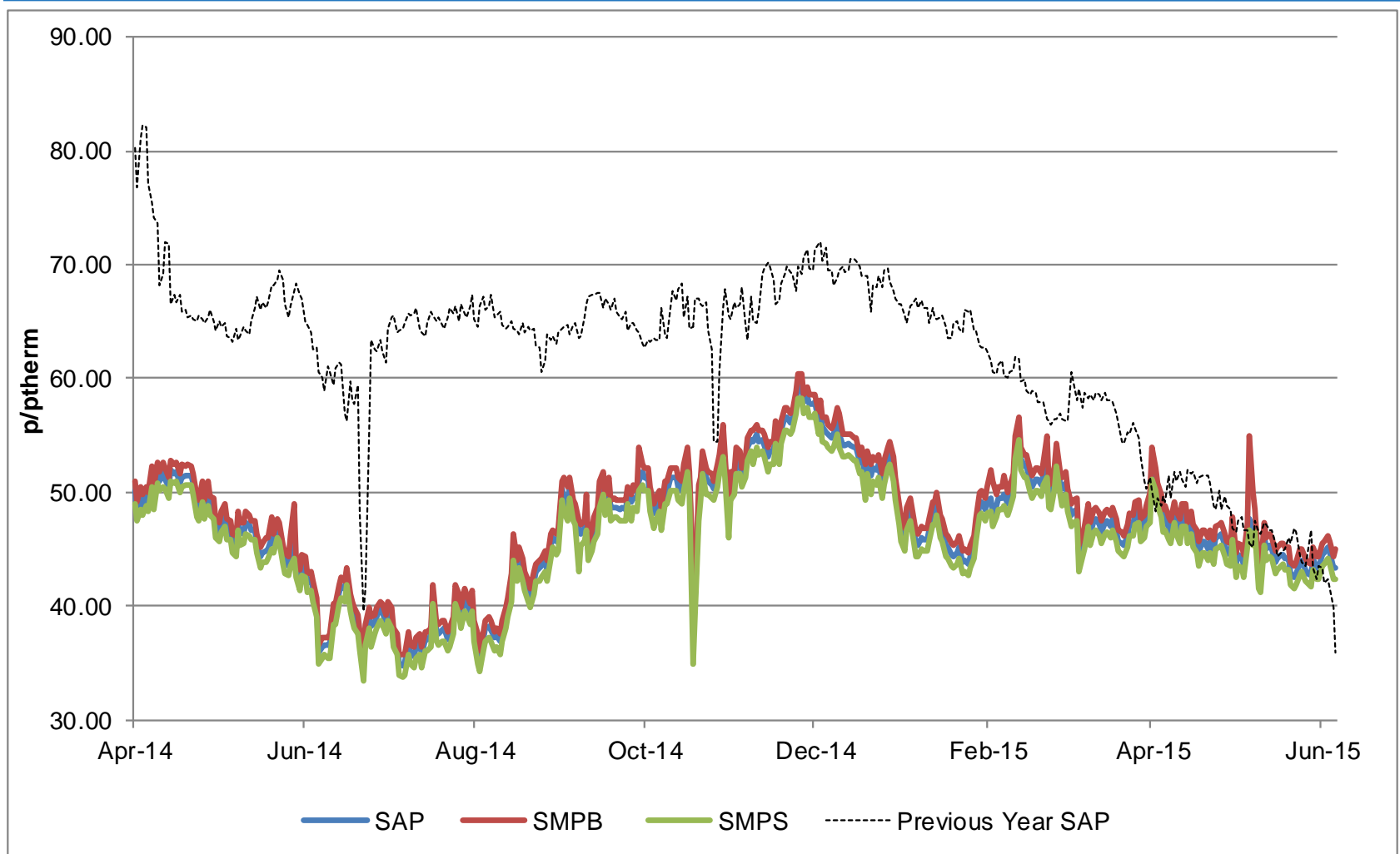
Combined EU Storage Stocks [% Full]

From 1st October 2014 to 6th June 2015 vs Previous Years



UK Gas Prices

1st April 2014 to 6th June 2015 vs Previous Years



What Operational Issues Affected Users?



Transporter Actions and Neutrality

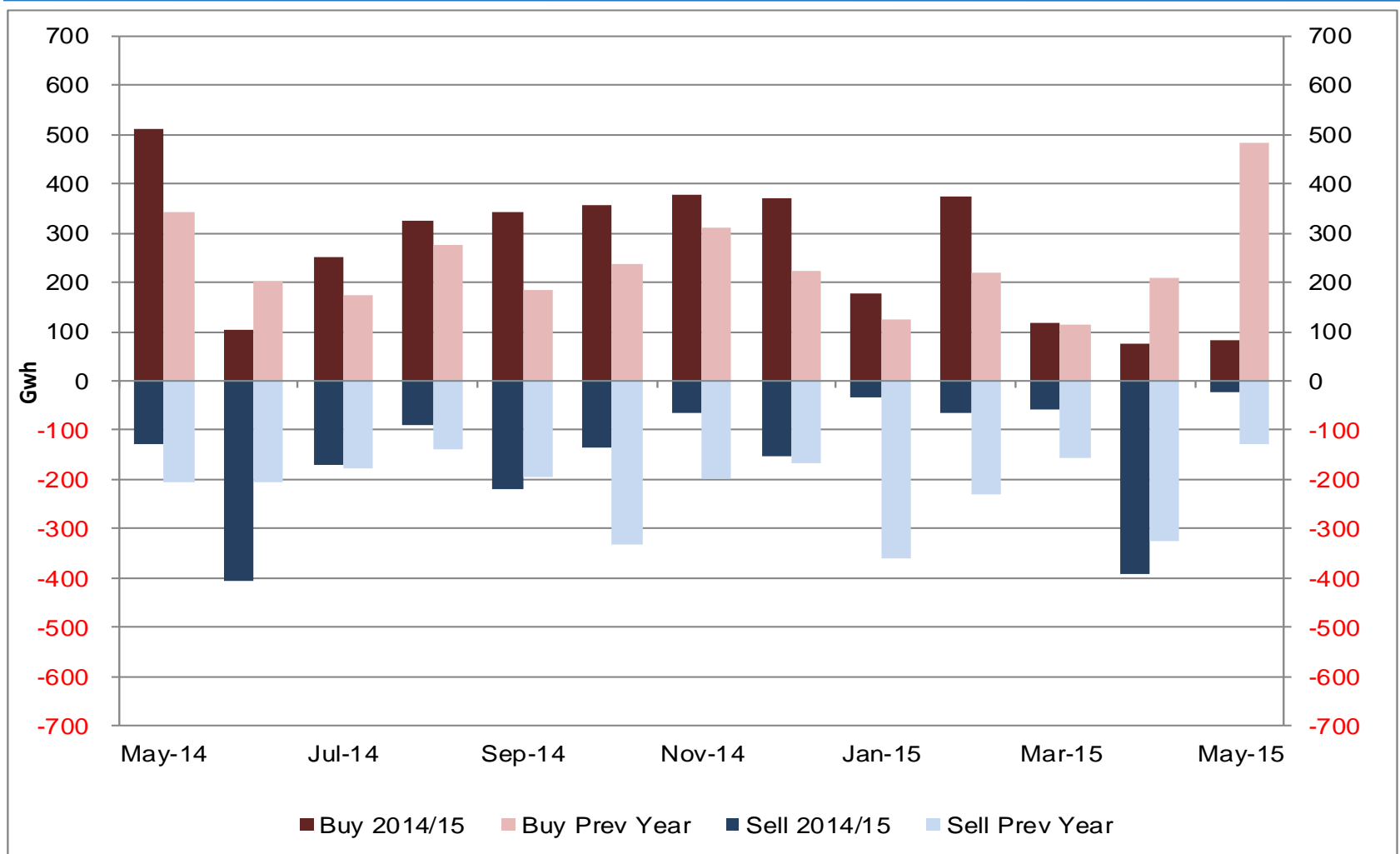


- Energy Balancing
- Capacity

Transporter Energy Traded on the OCM

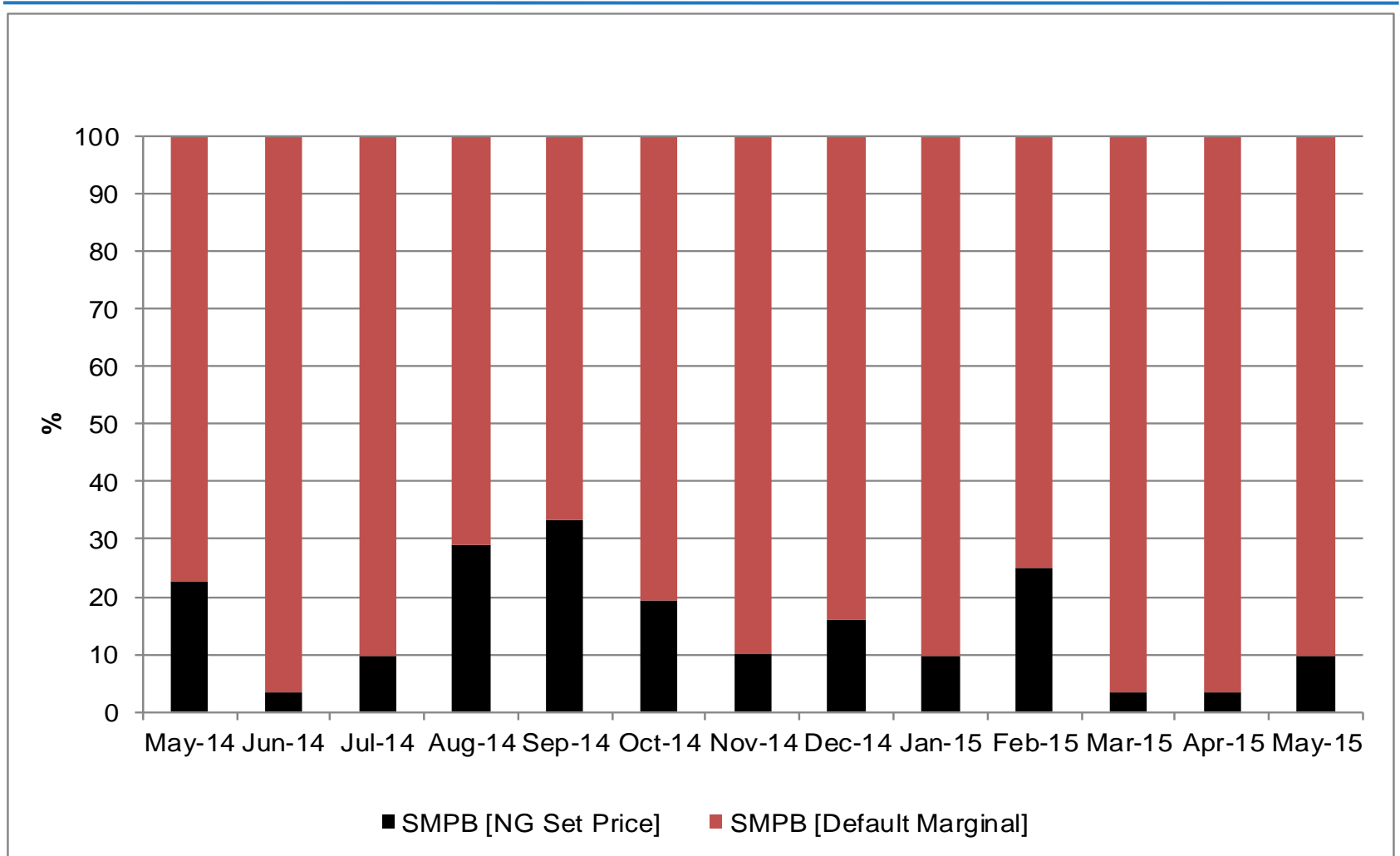
NGG Monthly Buys and Sells

May 2014 to May 2015 vs Previous Year



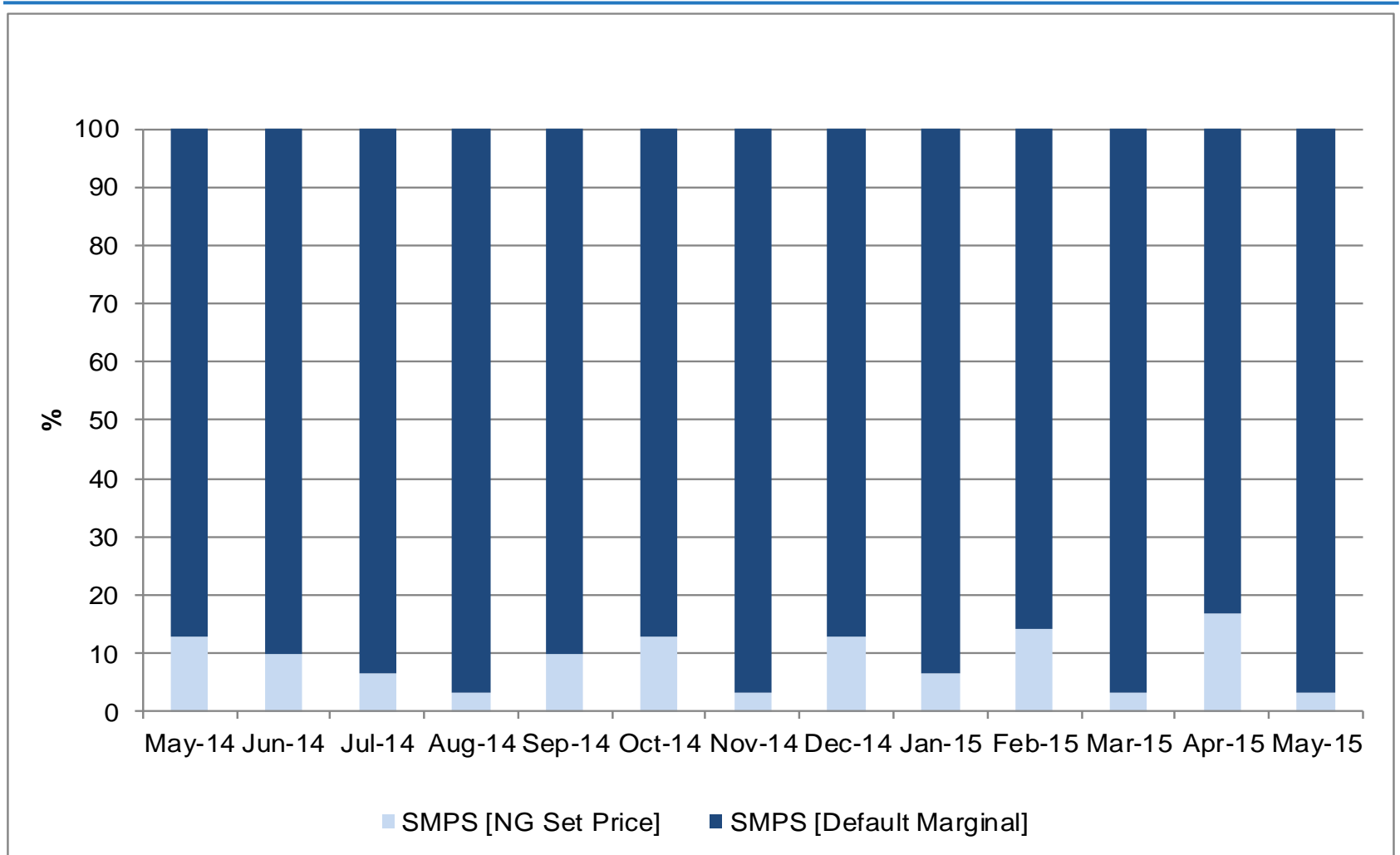
Days of Default SMP Prices [SMPB]

From May 2014 to May 2015



Days of Default SMP Prices [SMPS]

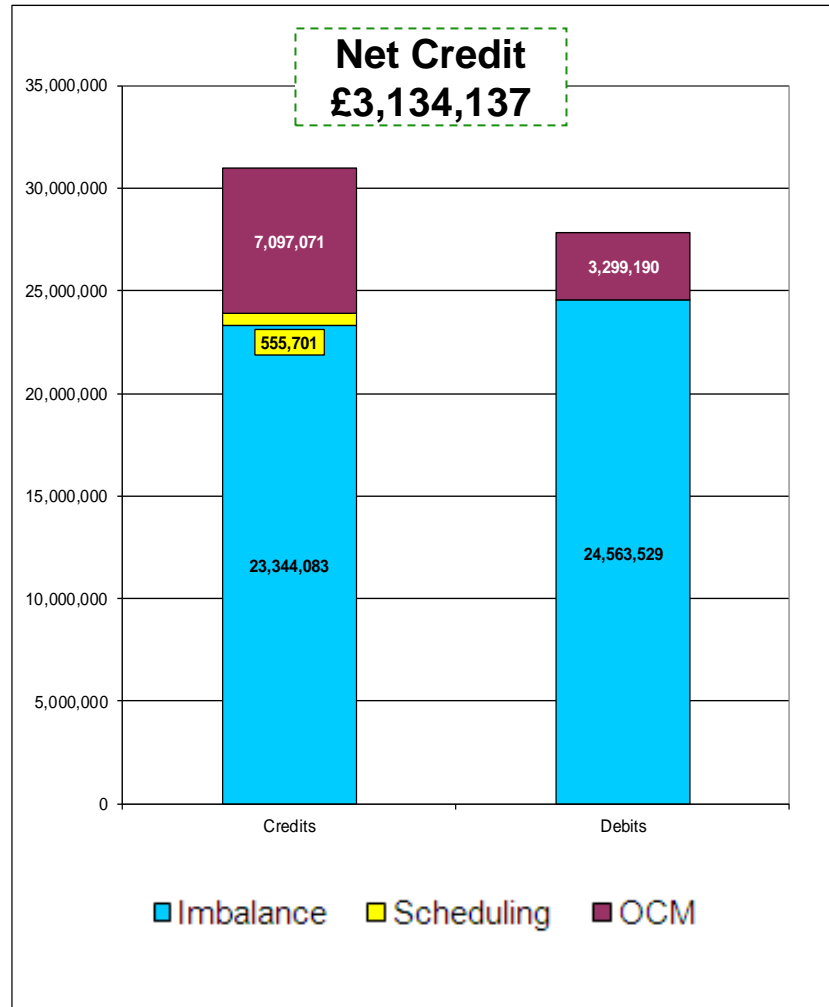
From May 2014 to May 2015



Energy Balancing – Balancing Costs

Payments / Charges / Net Credit / Debit [Imbalance / Scheduling / OCM]

April - May 2015



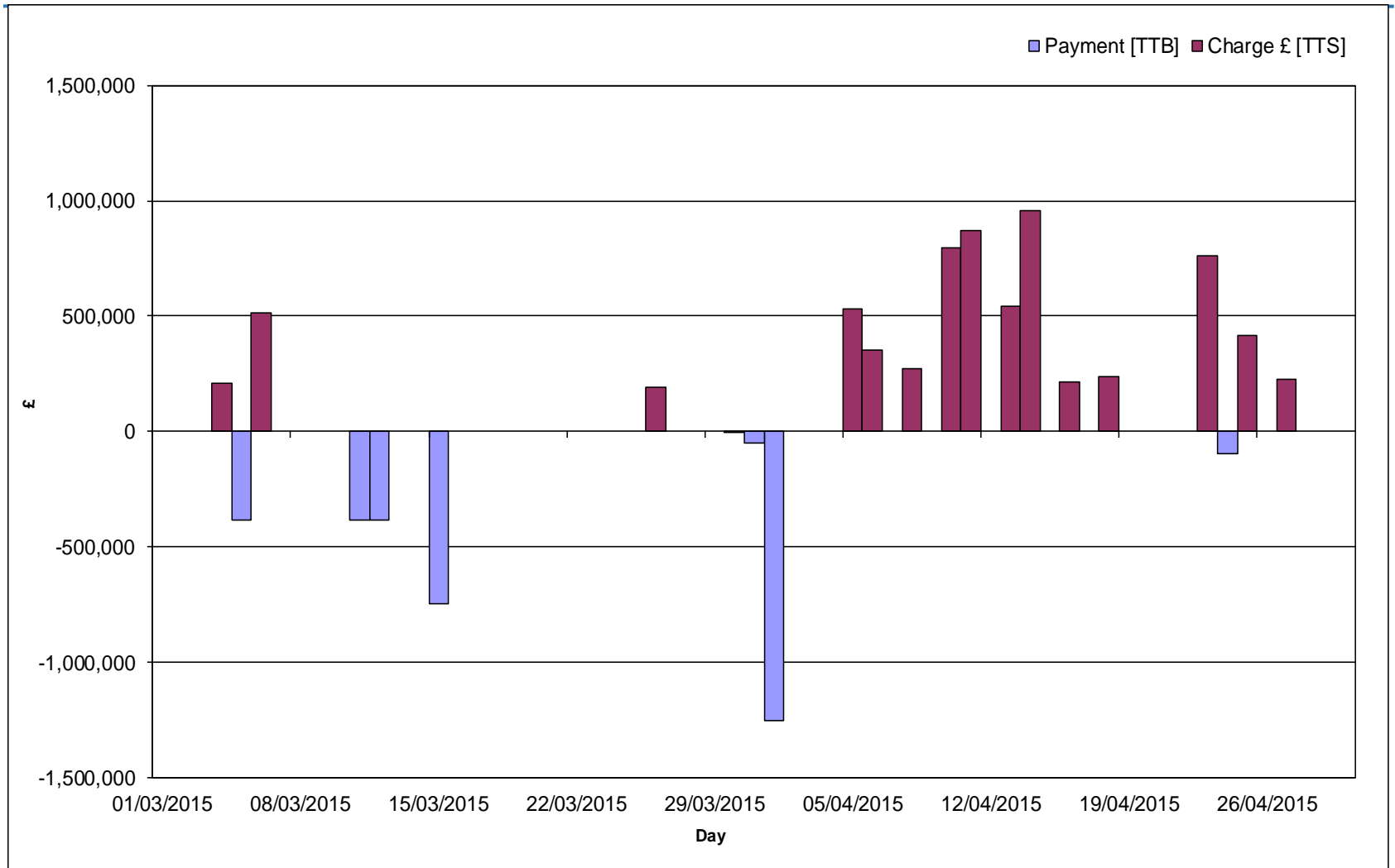
Energy Balancing – Balancing Costs

Jan - Feb 2015

		Mar-15	Apr-15
Imbalance	Payment £ [DCS]	-9,943,950	-14,619,579
	Charge £ [DCT]	12,512,547	10,831,537
Scheduling	Exit Charge £ [DXS]	8,523	11,784
	Exit Charge £ [EXS]	59,504	75,824
	Entry Charge £ [ESC]	178,350	221,716
OCM	Payment £ [TTB]	-1,950,474	-1,348,716
	Charge £ [TTS]	917,565	6,179,506
Balancing Costs		1,782,065	1,352,072

Energy Balancing – Balancing Costs

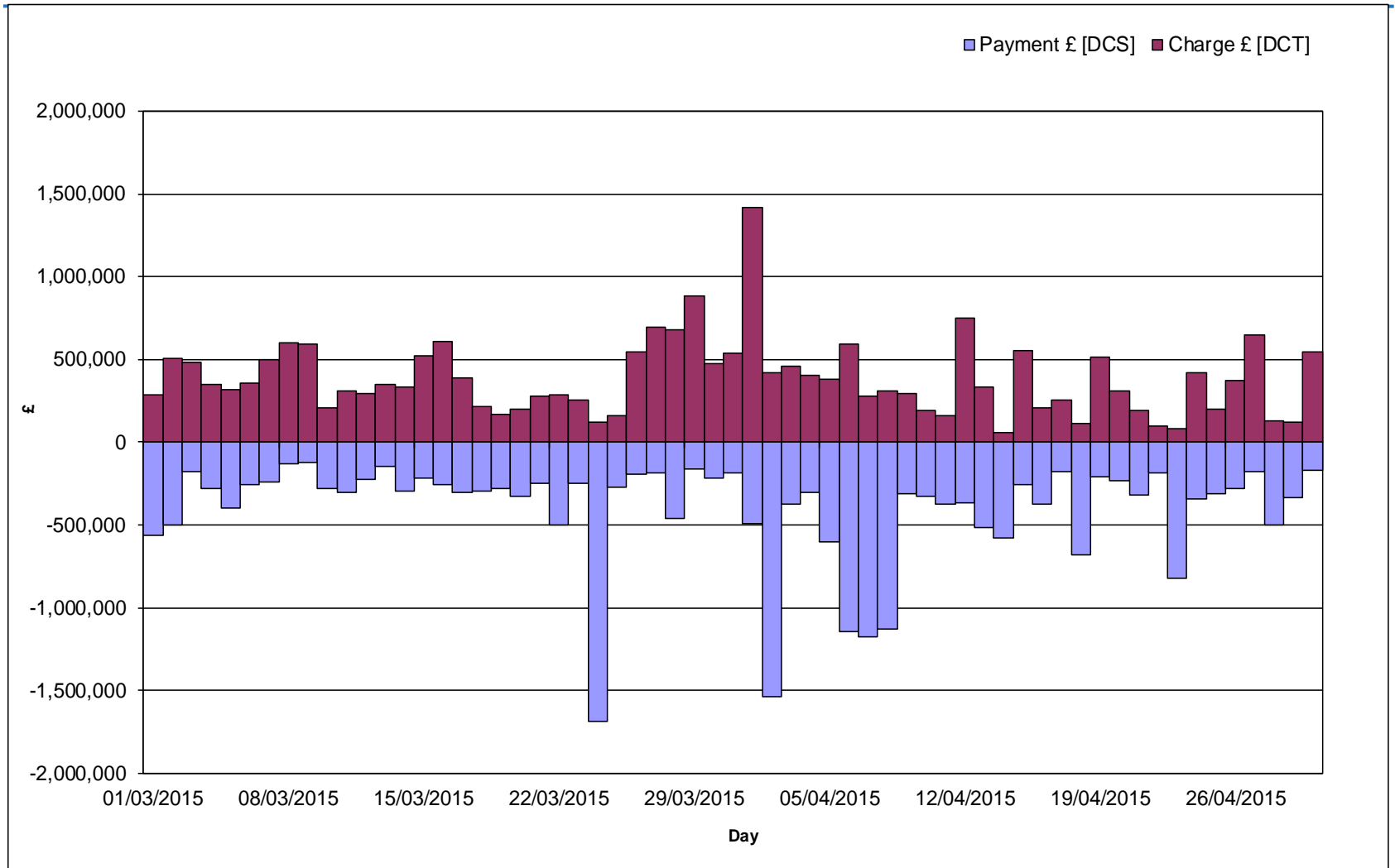
OCM Payments / Charges
April 2015 to May 2015



Energy Balancing – Balancing Costs

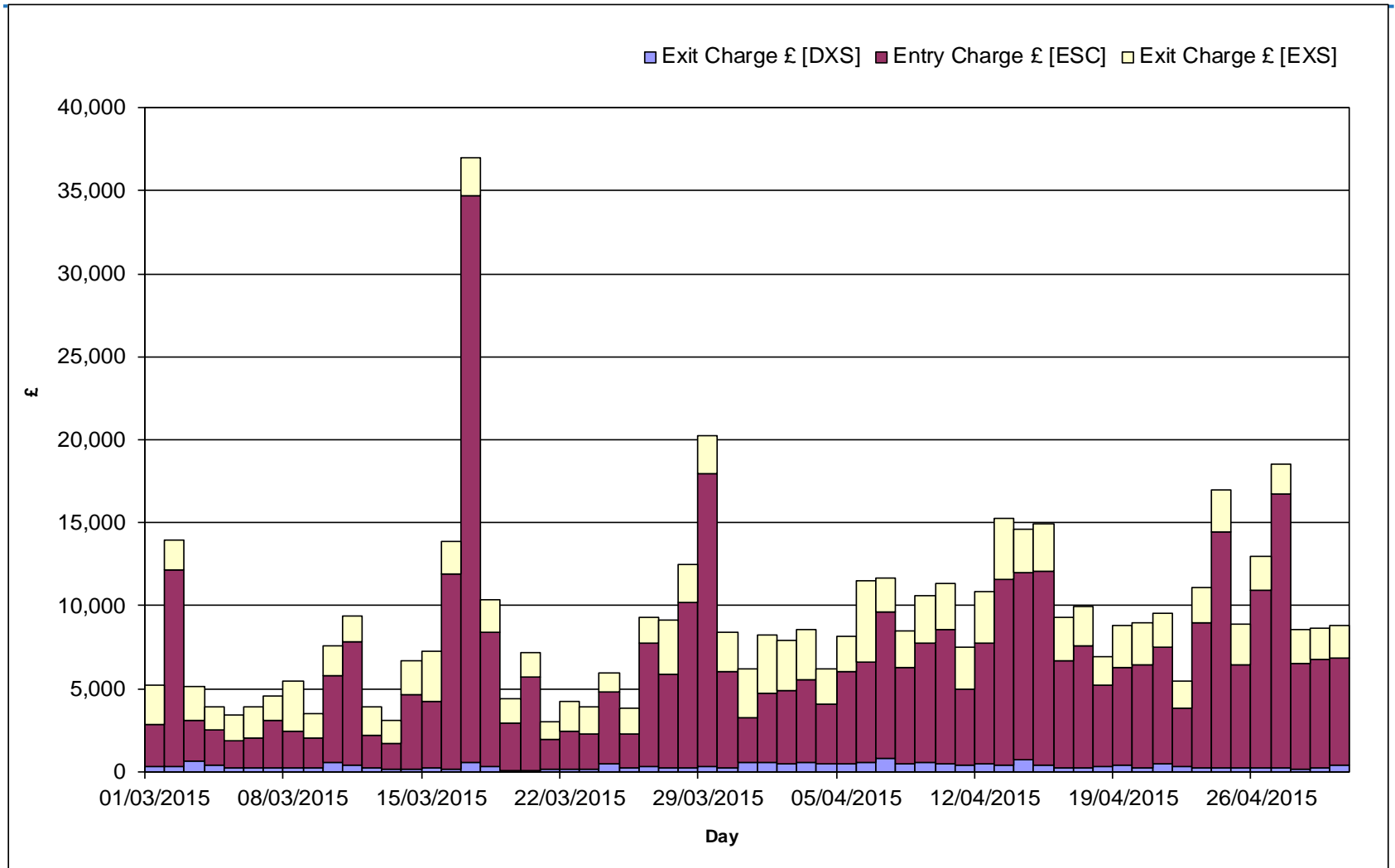
Imbalance Payments / Charges

April 2015 to May 2015



Energy Balancing – Balancing Costs

Scheduling Charges
April 2015 to May 2015



Capacity Neutrality

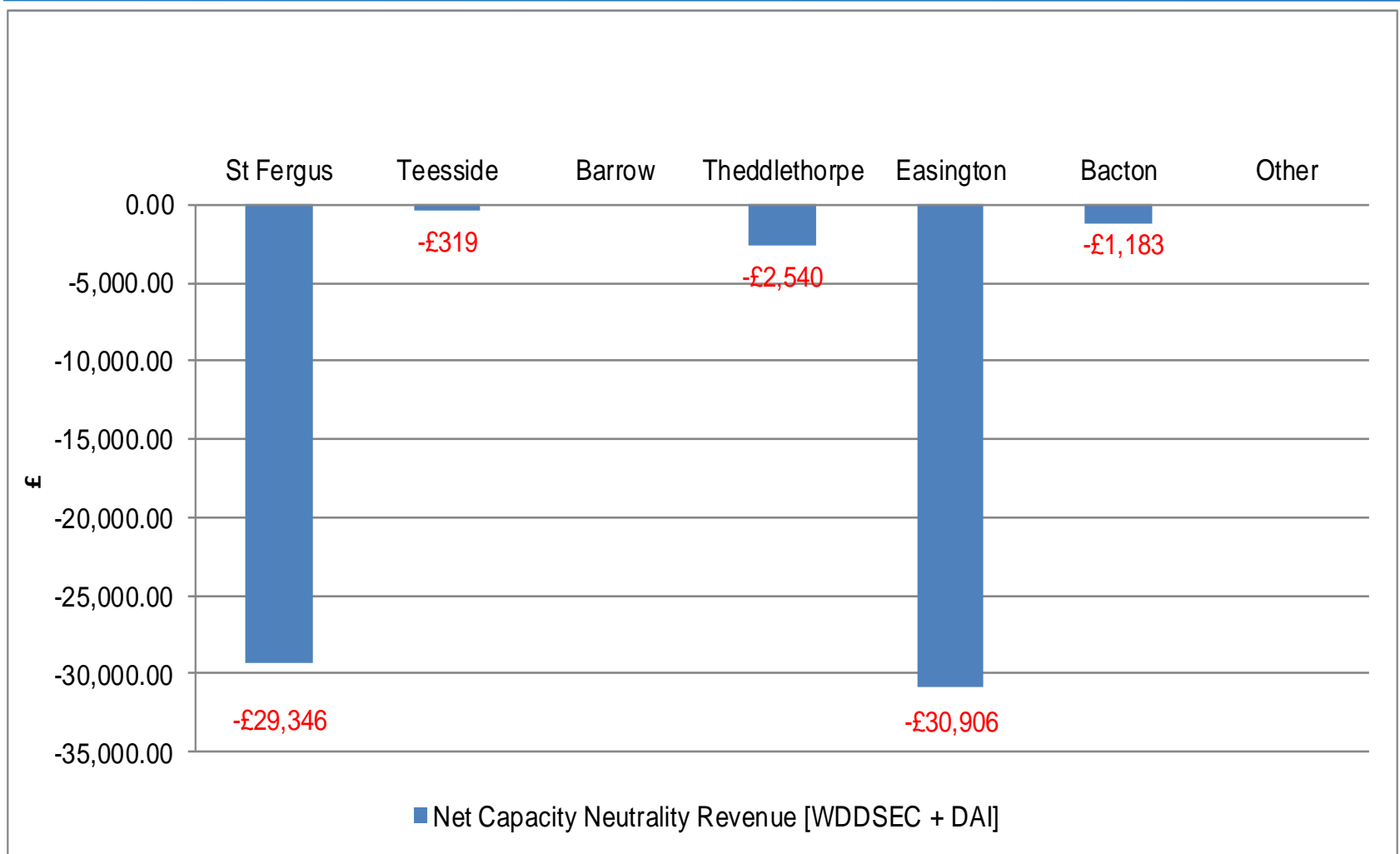
Net Cost / Revenue From 1st April 2015 to 31st May 2015

	Revenue/Costs
WDDSEC/DAI Entry Capacity Revenue	-£64,294
Total Entry Constraint Management Operational Costs	£0
Entry Capacity Overrun Revenue	-£212,709 [Apr 2015, May 2015 data not yet available]
Non-Obligated Sales Revenue (Entry only)	£0
Revenue from Locational Sells and PRI Charges	£0
Net Revenue	-£277,003

Net Capacity Neutrality Revenue

[Daily Obligated Entry Capacity and Interruptible Entry Capacity: WDDSEC + DAI]

From 1st April 2015 to 31st May 2015



Capacity Neutrality

Revenues from Entry Cap Overruns and Non-Obligated Sales,
and Locational Sells and PRI Charges.

Totals From 1st April 2015 to 31st May 2015

Month	Entry Cap Overrun Revenue	Non-obligated sales revenue (entry)
Apr-15	-£212,709	£0
May-15	NOT YET AVAILABLE	£0
Jun-15		
Jul-15		
Aug-15		
Sep-15		
Oct-15		
Nov-15		
Dec-15		
Jan-16		
Feb-16		
Mar-16		
Total	-£212,709 (FY15-16)	£0 (FY15-16)

Month	Locational Sells and PRI charges revenue
Apr-15	£0
May-15	£0
Jun-15	
Jul-15	
Aug-15	
Sep-15	
Oct-15	
Nov-15	
Dec-15	
Jan-16	
Feb-16	
Mar-16	
Total	£0 (FY15/16)